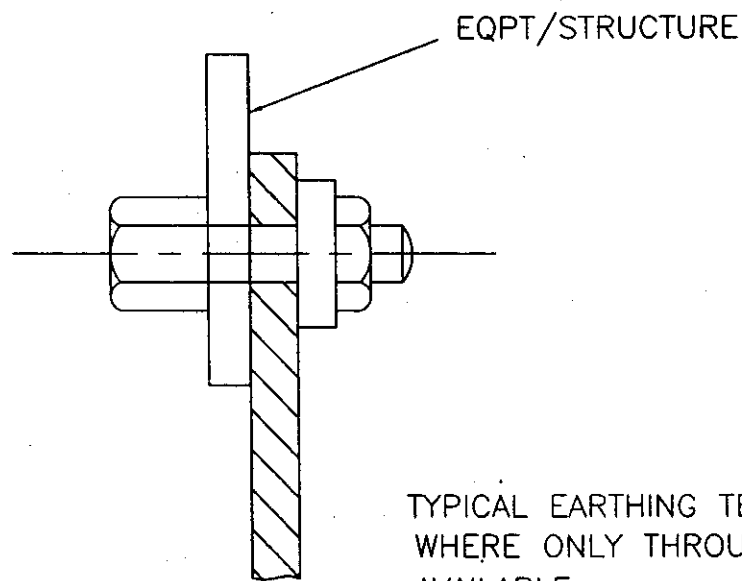


TYPICAL EARTHING TERMINAL JOINT



### NOTE

1. THIS IS GENERAL TYPICAL BOLTING ARRANGEMENT APPLICABLE TO ALL PANELS, EQUIPMENT, ETC, WHERE BOLTING ARRANGEMENT IS PROVIDED.
2. IN CASE EARTHING TERMINAL COMPRISES ONLY A TAPPED HOLE SUITABLE BOLT/ SCREW WITH WASHER MAY BE USED FOR EARTHING CONDUCTOR TERMINATION



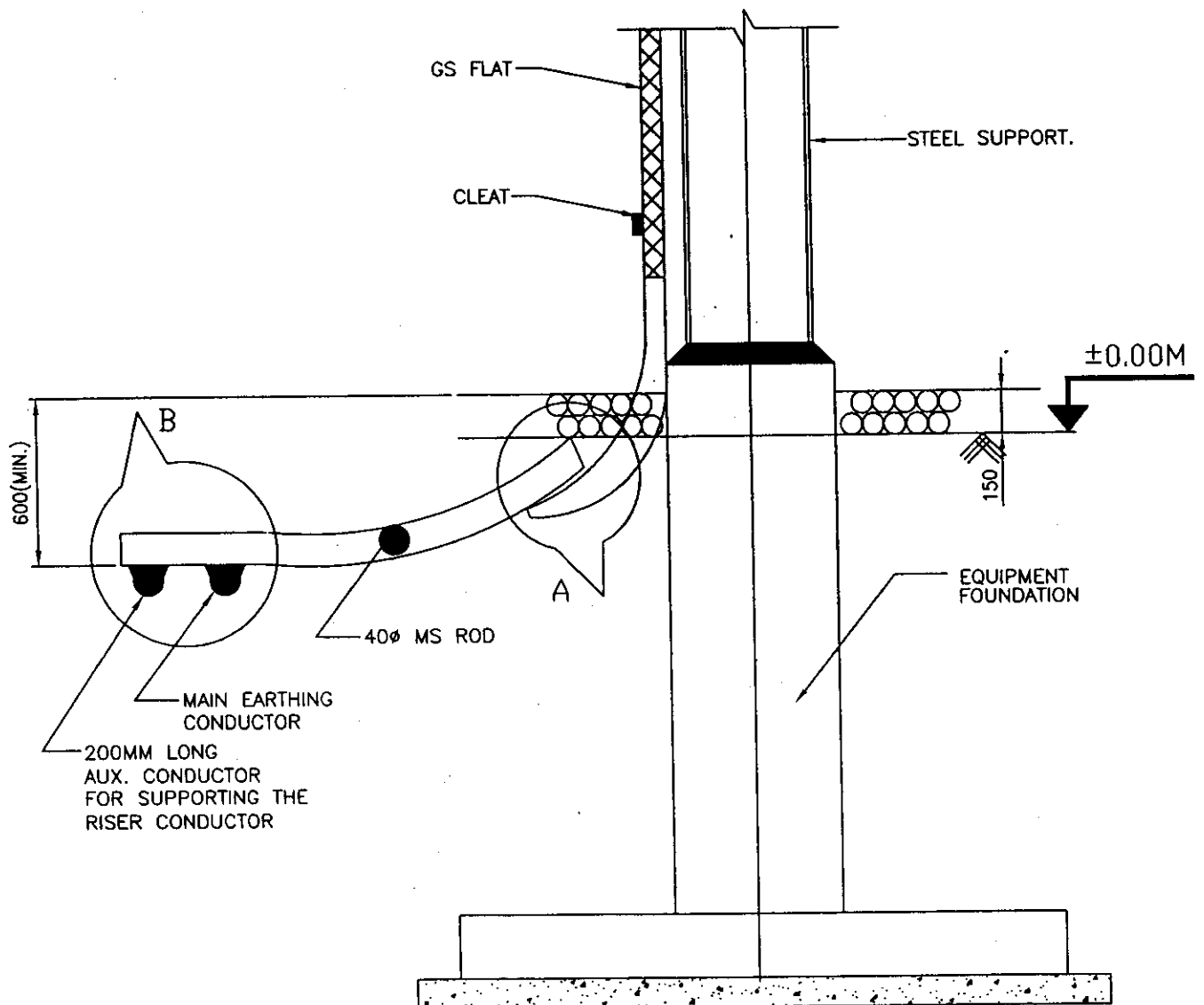
### EQUIPMENT EARTHING DETAILS TYPICAL ARRANGEMENT OF BOLTED JOINTS

DRG. No.

TB-4-314-316-008

REV. 01

SHEET No.  
16



TYPICAL DETAILS OF RISER



# EQUIPMENT EARTHING DETAILS

WELDING DETAILS

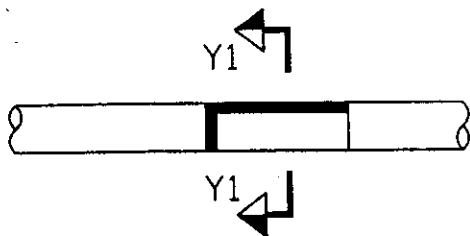
COMPUTERREF.NO.

DRG. No.

TB-4-314-316-008

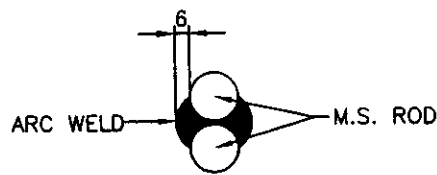
REV. 01

SHEET No.  
17

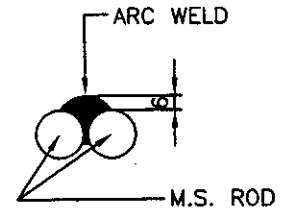


ELEVATION

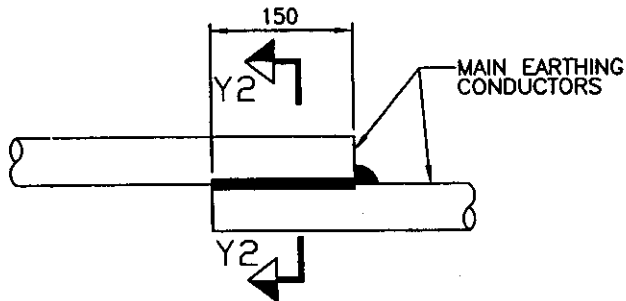
(CONDUCTOR IN HORIZONTAL PLANE)



SECTION Y2-Y2

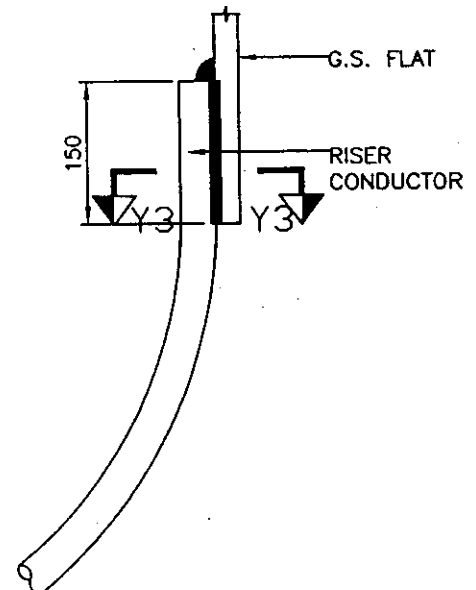
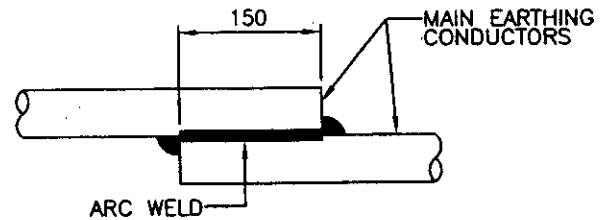


SECTION Y1-Y1

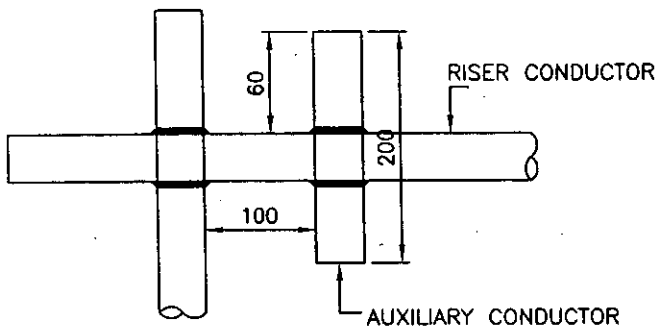


ELEVATION

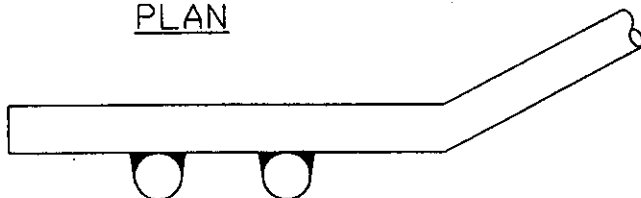
(CONDUCTOR IN VERTICAL PLANE)



ELEVATION  
DETAIL-A

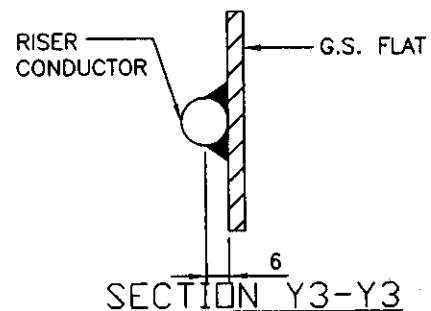


PLAN



ELEVATION

DETAIL-B



SECTION Y3-Y3

TYPICAL OVERLAPPING JOINT OF TWO CONDUCTORS



EQUIPMENT EARTHING DETAILS

WELDING DETAILS

COMPUTER REF. NO.

DRG. No.

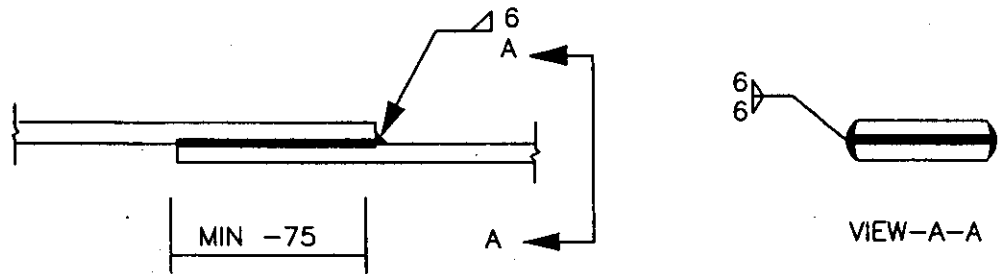
TB-4-314-316-008

REV. 01

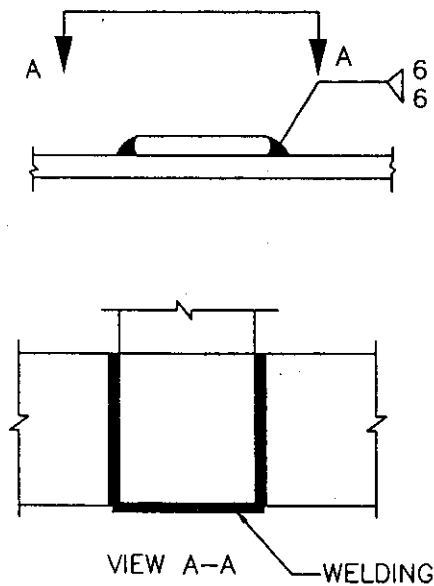
SHEET No.  
18

## C. STRIP TO STRIP (50X6 MS FLAT ONLY)

### 1. STRAIGHT LAP JOINT/RISER



### 2. CROSS LAP JOINT



## EQUIPMENT EARTHING DETAILS WELDING DETAIL

COMPUTER REF. NO.

DRG. No.

TB-4-314-316-008

REV. 01

SHEET No.  
19

PROJECTION (ALL DIMENSIONS ARE IN MM)

FIR

100-015-PIE-E-B1 ON 3RD

ICT - 1  
(FUTURE)

TO 400KV  
EXISTING DTL  
SWITCHYARD

ICT - 2  
(FUTURE)

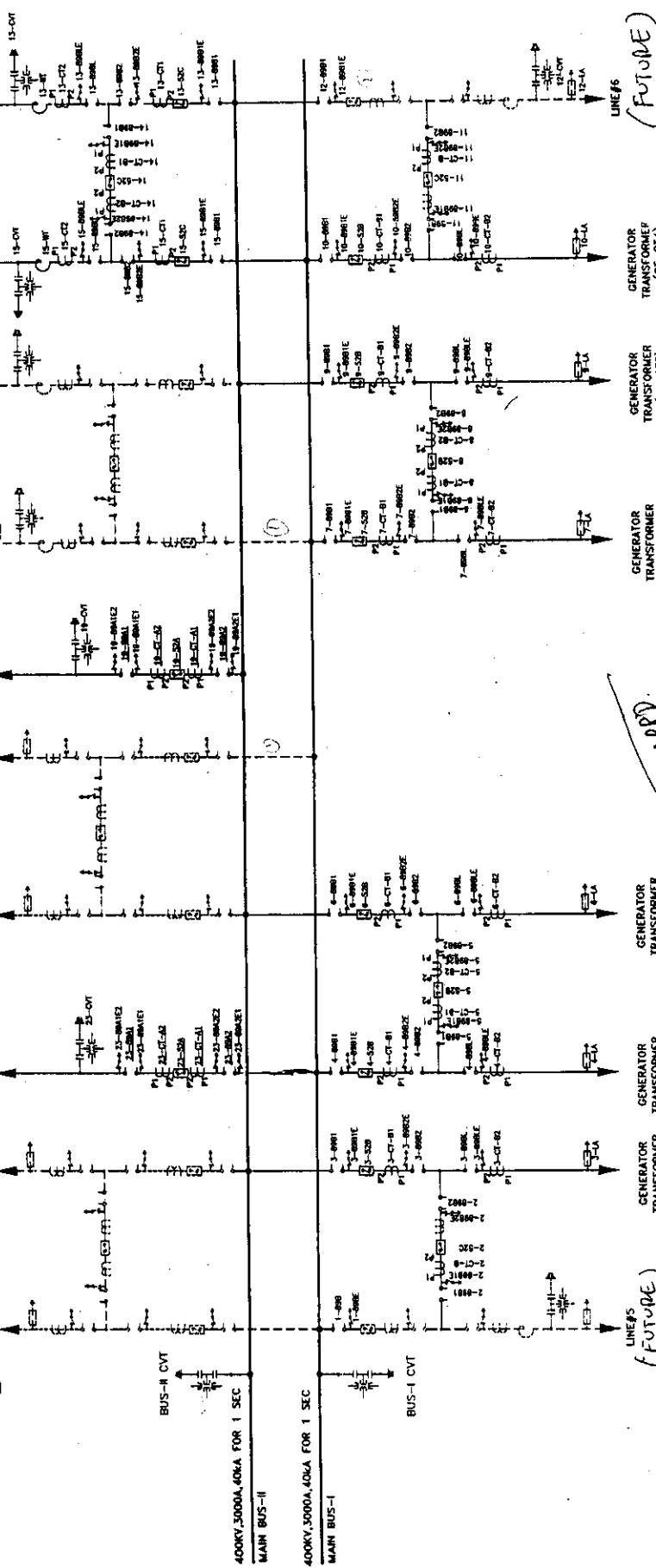
TO 400KV  
EXISTING DTL  
SWITCHYARD

ICT - 3  
(FUTURE)

TO 400KV  
EXISTING DTL  
SWITCHYARD

ICT - 4  
(FUTURE)

TO 400KV  
EXISTING DTL  
SWITCHYARD



SCHEDULE OF EQUIPMENT

S.NO	DESCRIPTION	SYMBOL	QTY	DESIG
1	400 KV CIRCUIT BREAKER WITH CLOSE RESISTOR 2000A, 40 KA, 1 SEC	CB	05	52C
2	400 KV CIRCUIT BREAKER WITHOUT CLOSE RESISTOR 2000A, 40 KA, 1 SEC	CB	08	52B
3	400 KV CIRCUIT BREAKER WITHOUT CLOSE RESISTOR 3150A, 40 KA, 1 SEC	CB	02	52A
4	400KV 3150A, 40KA FOR 1 SEC ISOLATOR WITH TWO EARTH SWITCH	IS	04	89A
5	400KV 2000A, 40KA FOR 1 SEC ISOLATOR WITH ONE EARTH SWITCH	IS	36	89B
6	400KV/2000A, 40KA FOR 1 SEC CURRENT TRANSFORMER	CT	12	CT-B
7	400KV/3000A, 40KA FOR 1 SEC CURRENT TRANSFORMER	CT	12	CT-A
8	400KV 8000V CAPACITIVE VOLTAGE TRANSFORMER	CVT	18	CVT
9	300KV, 20KA Class-3 SURGE ARRESTER	EA	24	EA
10	WAVE TRAP (UNDER CUSTOMER SCOPE)	WT	04	WT

NOTES:-

1. --- INDICATES NOT IN BHEL SCOPE.
2. SYSTEM: 400KV, 2000A, 40KA FOR 1SEC, SOLIDLY EARTHED.

NTPC LIMITED GENERATOR TRANSFORMERS ARE IN BHEL (PEM) SCOPE.  
(A G.M. of India Engineering Equipment UNDERLINED ARE RATED FOR 3150 AMP.  
CONSULTANCY WORK MADE TRAPS ARE NOT IN SCOPE OF BHEL.

DATE: 13/8/88  
(Signature)

TRANS NO.	DATE	STATUS	CONTRACT

PRAGATI POWER CORPORATION LIMITED  
NTPC - CONSULTANCY WING  
PRAGATI - III COMBINED CYCLE POWER PROJECT  
1500MW (NOMINAL) AT BAWANA DELHI

REV.	DATE	CHD.	APPD.	REV.	DATE	CHD.	APPD.
				01			

NAME	DRAWN	CHECKED	APPROVED
KAPIL			

REV.	DATE	CHD.	APPD.	REV.	DATE	CHD.	APPD.
				01			

It must not be used directly or indirectly in anyway detrimental to the interest of the company

SIGN & DATE

INVENTORY NO.

SCALE W.O. No. 422

DEPT. TBEM

DATE 13/8/88

STATUS CONTRACT

CONTRACT NO.

DATE 13/8/88

STATUS CONTRACT

CONTRACT NO.

DATE 13/8/88

STATUS CONTRACT

CONTRACT NO.